



# INSTALLATION AND OPERATION MANUAL

PLEASE READ AND SAVE INSTRUCTIONS  
FOR FUTURE REFERENCE.



## MODEL

MAX138P  
MAX260P



# TABLE OF CONTENTS

IMPORTANT NOTICE .....	1
WARRANTY REGISTRATION .....	1
ELECTRICAL SUPPLY.....	1
OPERATING PRINCIPLE .....	1
INSTALLATION GUIDELINE .....	1
KEY FUNCTIONS .....	2
FUNCTION DESCRIPTION .....	3
MAINTENANCE .....	7
STORAGE TIPS .....	8
ERROR CODES .....	8
LIMITED WARRANTY .....	9
EXCLUDED LIMITED WARRANTY .....	9
WIRING DIAGRAM .....	9

## IMPORTANT NOTICE

1. Ensure a Grounded Power Source: Always connect the dehumidifier to a grounded power source for safe operation. Failure to do so will result in the warranty becoming void.
2. Qualified Technician Repairs: Only allow qualified technicians to perform repairs on the unit to maintain its functionality and safety.
3. Post-Flood Care: In the event of flooding, thoroughly dry the dehumidifier before restoring power and operating it to prevent any damage.
4. Avoid Foreign Objects: Never insert objects or fingers into the air inlet or outlet to prevent any hazards or damage.
5. Cleaning Guidelines: To clean the unit, first unplug the power cord, and then use a damp cloth to wipe the exterior. Do not use water to wash the dehumidifier's exterior.
6. Weight and Objects: To prevent damage, do not stand on the dehumidifier or place any objects on it. Do not use extension cords or plug adapters.
7. Extension Cords: Avoid using extension cords or plug adapters to ensure a secure and stable power connection.
8. Maintenance Safety: Unless otherwise specified, always perform maintenance with the power turned off.

## WARRANTY REGISTRATION

To secure your warranty and facilitate future support, please take note of the following important details, which can be found on the data label located on the side of the unit.

**Model:** MAX138P/MAX260P

**Serial Number:**

**Date of Purchase:**

For all other questions, we suggest the following options:

1. Contact your installer.
2. Email us: [sales@xdrier.com](mailto:sales@xdrier.com)

## ELECTRICAL SUPPLY

Power Supply: 115 V 60 Hz, AC Single Phase  
Outlet Requirement: 3-Prong, GFCI  
Circuit Protector: 15 Amps

**WARNING:** 240 Volts AC may cause serious injury from electric shock. To reduce risk of injury:

1. Disconnect electrical power before servicing.
2. Only plug unit into grounded electrical circuit.
3. Do not use an extension cord.
4. Do not use a plug adapter.

## OPERATING PRINCIPLE

This dehumidifier utilizes an integrated humidity sensor to monitor enclosed spaces. When the relative humidity exceeds the selected set point, the dehumidifier is activated. Air is drawn across the evaporator coil, which possesses a lower dew point than the air, causing moisture to condense out of the air. Subsequently, the air is reheated by the condenser before being returned to the room.

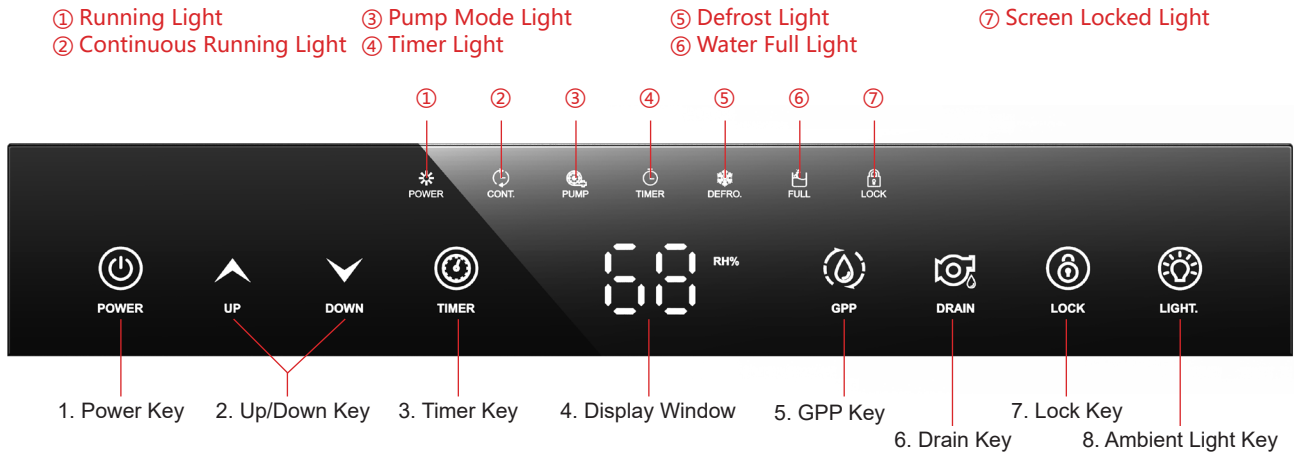
## INSTALLATION GUIDELINE

**For optimal performance and safety, please adhere to the following:**

1. The dehumidifier must be installed in a fully enclosed environment to effectively control moisture levels.
2. To ensure proper ventilation, avoid placing the inlet or outlet of the dehumidifier against a wall. Maintain a minimum clearance of at least 15 cm around both the inlet and outlet.
3. For the most efficient dehumidification, position the unit in the center of the room.
4. Dehumidifiers are designed for upright operation near the floor. Ensure the unit is placed in this orientation for proper functionality.

# KEY FUNCTIONS

The dehumidifier conserves energy by automatically entering a low-power mode if not used in the “on” state for some time. In this mode, only the POWER key and display are active. To wake it up, press any key. The unit will beep when the operation is successful.



## 1. POWER KEY

Press this key to turn the dehumidifier on and off as well as to clear programmed timer and pump functions.

## 2. UP/DOWN KEY

Press this key to adjust the humidity or moisture level as well as to set the timer.

## 3. TIMER KEY

Press this key to display the flickering window and set a desired shut-off time. Then, use the “UP” or “DOWN” key to adjust the timer settings. (Refer to the timer function section for detailed instructions)

## 4. DISPLAY WINDOW

The display window provides information on relative humidity, humidity level, error codes, schedules, ambient temperature, and coil temperature.

## 5. GPP KEY

Press this key to activate/deactivate the humidity content mode. When the GPP function is on, total humidity is expressed and controlled by the humidity content.

## 6. DRAIN KEY

Press and hold this key for 3 seconds to toggle the water pump function on or off. When the water pump function is on, briefly pressing the DRAIN key activates a 28-second water drainage process.

## 7. LOCK KEY

Press and hold this key for 3 seconds to lock/ unlock the screen. While the screen is locked, all keys, except the LOCK key, are disabled and will not respond.

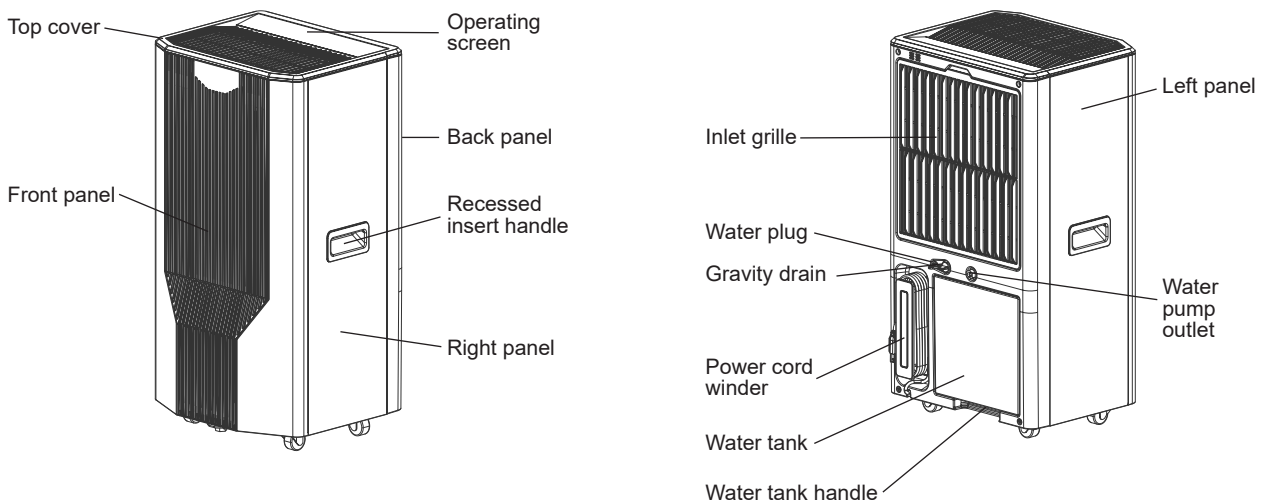
## 8. AMBIENT LIGHT KEY

Press this key to toggle the ambient light on or off.

## 9. KEY COMBINATIONS

- Simultaneously press the “UP + TIMER” keys for 3 seconds to display the coil temperature in the display window.
- Simultaneously press the “DOWN + TIMER” keys for 3 seconds to display the room temperature in the display window.

# FUNCTION DESCRIPTION



\* The illustrations within this manual are for demonstrative purposes only. For an accurate representation of the product's appearance and functionality, please refer to the product you purchased.

## 1. Setting the Humidity Level

To adjust the humidity settings, follow these steps:

- 1) With the power on, press the "up" or "down" button. The display window will blink slowly to indicate the current humidity setting can be adjusted.
- 2) Within 3 seconds, press the UP or DOWN button to make your desired humidity setting. The humidity range varies from CO↔25%↔35%....↔75%↔80%↔CO in a cyclic selection. For internal settings, the range is CO↔25%↔35%....↔195%↔200%↔CO.
- 3) Each time you press the button during the setting process, the value increases or decreases by 5%. To quickly adjust the set humidity value, long-press the button.
- 4) Once the desired humidity level is set, hold your finger and do not press any buttons for 3 seconds. The display window will stop blinking slowly and show the currently detected humidity.
- 5) When the humidity reaches the set value, the device will enter standby mode, indicated by the blinking operation light. If the humidity rises, the device will automatically operate according to the set conditions.

## 2. Continuous Dehumidification Mode

- 1) With the power on, press the "up" or "down" button. The display window will flash slowly, showing the current set humidity value.
- 2) You can adjust the humidity by pressing the UP or DOWN button. The range includes CO. You have 3 seconds to make your adjustment.
- 3) If there is no button operation within 3 seconds, the display window will stop flashing and show the current detected humidity.

In continuous dehumidification mode, the device operates independently of humidity changes, but the time setting remains effective.

## 3. Timer Function

- 1) While the power is on, press the TIMER key. The display window will start flashing slowly and initially display "00H." If the timer was set to less than 1 hour, it will round up to 1 hour.

- 2) Within the next 3 seconds, you can select the timer duration by briefly pressing the "UP" or "DOWN" key. The available options cycle within the set range, including 00h↔01h↔02h↔03h...↔23h↔24h↔00h, with each press adjusting the time by 1 hour.
- 3) Once you've set your desired timer duration, refrain from pressing any buttons for 3 seconds. The display window will stop blinking and show the current detected humidity, indicating that your setting is complete. The time display will remain on, confirming the successful setting or change.
- 4) When the set time elapses, the device will automatically turn off, and the timer will be canceled. The time indicator will also turn off.

**Please note the following:**

- If you set the timer to 00H, the timer setting will be canceled.
- If the scheduled shutdown time has not been reached, you can press the POWER button to shut down the operation, and the timer setting will also be canceled.
- If a malfunction occurs during the timer countdown or if the water tank is full, the timer setting will remain unchanged.

#### **4. Memory Function**

If the machine is accidentally turned off and then on again, it will resume its previous mode and state. The compressor has a three-minute protection function, causing a brief startup delay.

Note that settings like humidity, mode, GPP, screen lock, and ambient light are stored and are retained upon restart. However, the timer and water pump function does not have a memory feature.

#### **5. Moisture Status Display**

In the initial default state, the ambient light is activated and can toggle on or off by pressing the LIGHT button. When the ambient light is active, it changes color to indicate the humidity level:

- Orange indicates low humidity (below 55%)
- Green indicates adequate humidity (55% - 70%)
- Red indicates high humidity (above 70%)

#### **6. Plasma Function (*Only MAX260 provides this function.*)**

The plasma function activates and deactivates automatically when the unit is turned on or off.

#### **7. Lock Screen Function**

- 1) When turning on the dehumidifier, press and hold the LOCK key for 3 seconds.
- 2) The dehumidifier will emit a single beep, and the lock screen indicator light will remain illuminated.
- 3) While the lock screen is active, all buttons, except for the LOCK button, will be disabled and will not respond to input.

To deactivate the lock screen and regain normal button functionality:

- 1) Press and hold the LOCK button again for 3 seconds.
- 2) Once unlocked, each function key will return to its regular operation, and the corresponding lock screen indicator light will turn off.

#### **8. GPP Function**

By default, when the GPP function is not active, the display window shows the relative humidity (RH%) after the initial power-on. To enable the GPP function, press the GPP key, and the display window will

switch to show grams per liter (g/L). This change indicates that the GPP function is now activated. To return to the humidity display, press the GPP key once more.

When the GPP mode is engaged, the instrument displays the current humidity level, and the device operates according to the set humidity level.

## 9. Defrost Function

This machine will defrost automatically when low ambient temperatures lead to surface icing.

During defrosting, the defrost lamp stays continuously lit, and the operation lamp flashes slowly. Once defrosting is complete, the device will return to its preset conditions. The defrost indicator light will turn off, and the operation light will stop flashing slowly.

## 10. Full Tank Function

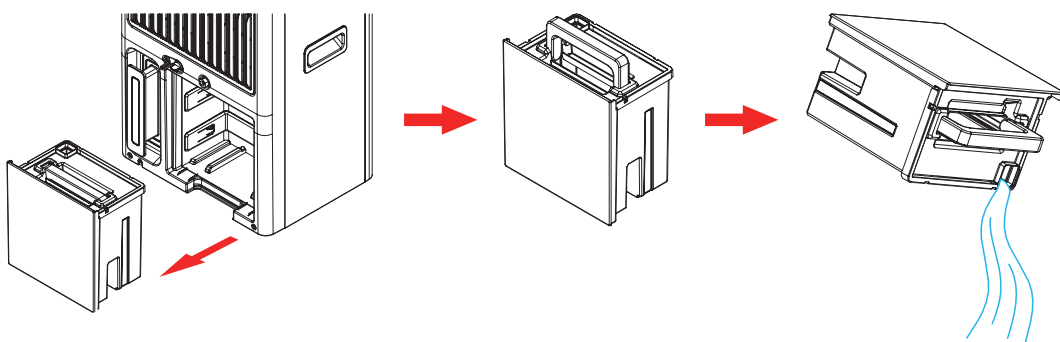
When the dehumidifier's water tank reaches full capacity, the unit will activate an alarm, cease operation, illuminate the full water indicator, and have the operation indicator flash slowly.

To resolve this, simply empty the water tank. Once the tank is empty and correctly reinserted, the full water indicator "FULL" will turn off, and the operation light will stop blinking slowly. The device will then restore its initial settings and resume normal operation.

## 11. Drainage Function

When using the water tank:

- 1) Disable the dehumidifier's water pump drainage and seal the gravity drain with a water plug.
- 2) When the water tank reaches full capacity, the dehumidifier will activate an alarm, cease operation, and have the operation indicator flash slowly, and the "FULL" indicator will remain lit.
- 3) Start by removing the water tank from the dehumidifier.
- 4) Lift the water tank and empty the collected water.
- 5) After emptying the water tank, reinsert it into the dehumidifier. The "FULL" indicator will turn off, and the operation light will gradually stop flashing. The dehumidifier will then resume normal operation.



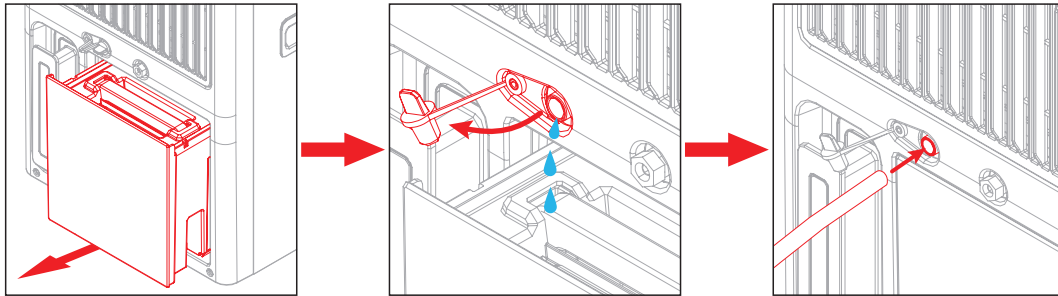
## 12. When Using The Gravity Drain

- 1) To begin, gently pull out the water tank about 4". Disconnect the water plug and empty any remaining water from the machine.
- 2) Attach the gravity drain pipe securely, ensuring a tight connection. Be certain that the water hose does not extend above the level of the gravity drain.
- 3) If the dehumidifier activates an alarm, halts operation, flashes the power light, and illuminates the



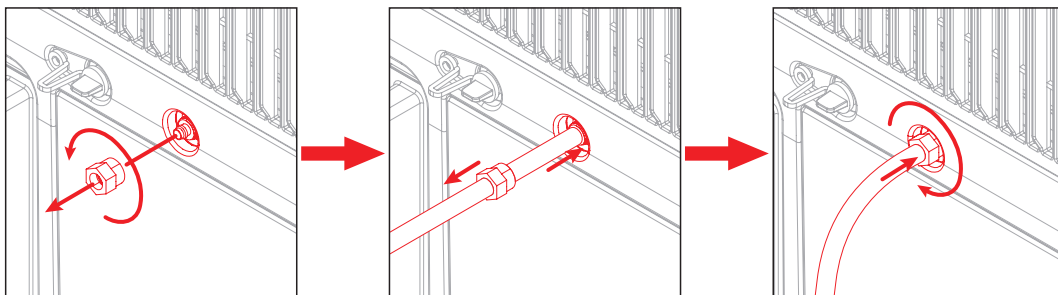
"FULL" water indicator. Inspect the drain pipe for clogs or bends.

- 4) Remove any foreign objects obstructing the water pipe, confirm it is clear of blockages, and drain any excess water that may have spilled into the water tank due to clogs. Then, reinsert the water tank into the dehumidifier. The "FULL" water full indicator will turn off, and the operation light will stop flashing slowly. The unit will return to normal operation.



### 13. When Using The Water Pump:

- 1) Ensure the gravity drain is connected to a water source.
- 2) Begin by unscrewing the nut from the water pump outlet. Insert the water pipe into the opening left by the removed nut and securely tighten it in place.
- 3) To activate the dehumidifier's water pump drainage function, press and hold the "DRAIN" button for a duration of 3 seconds. When successfully initiated, the dehumidifier will emit a beep sound, and the water pump mode indicator light will illuminate.
- 4) While in water pump mode, pressing the "DRAIN" button will initiate a 28-second water drainage cycle.
- 5) In the event of an "E4" alarm, please inspect the water pump drain pipe for any obstructions or kinks.
- 6) Clear any obstructions to ensure smooth water flow in the pipe. After addressing the "E4" alarm or deactivating the water pump function, the dehumidifier will return to normal operation.



## MAINTENANCE

### **IMPORTANT SAFETY NOTE:**

Always unplug the machine before any maintenance.

- **Machine Housing:**

Wipe the exterior with a soft, damp cloth. Avoid using detergent.

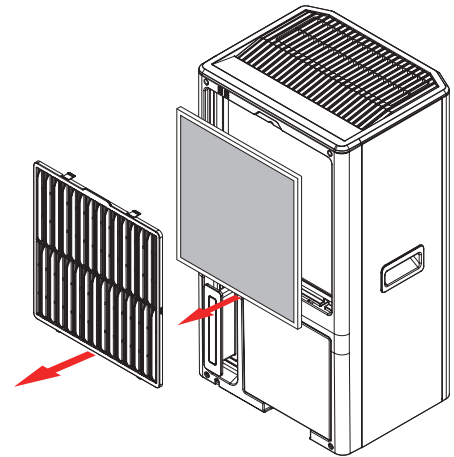
- **Coil:**

Annually clean cooling coils using a self-washing, foaming cleaner like WEB® Coil Cleaner.

- **Filter:**

To clean the filter:

- 1) Remove it from the rear air inlet grille.
- 2) Use a vacuum cleaner or wash with warm water (no detergent).
- 3) Dry in a cool place before reinserting.



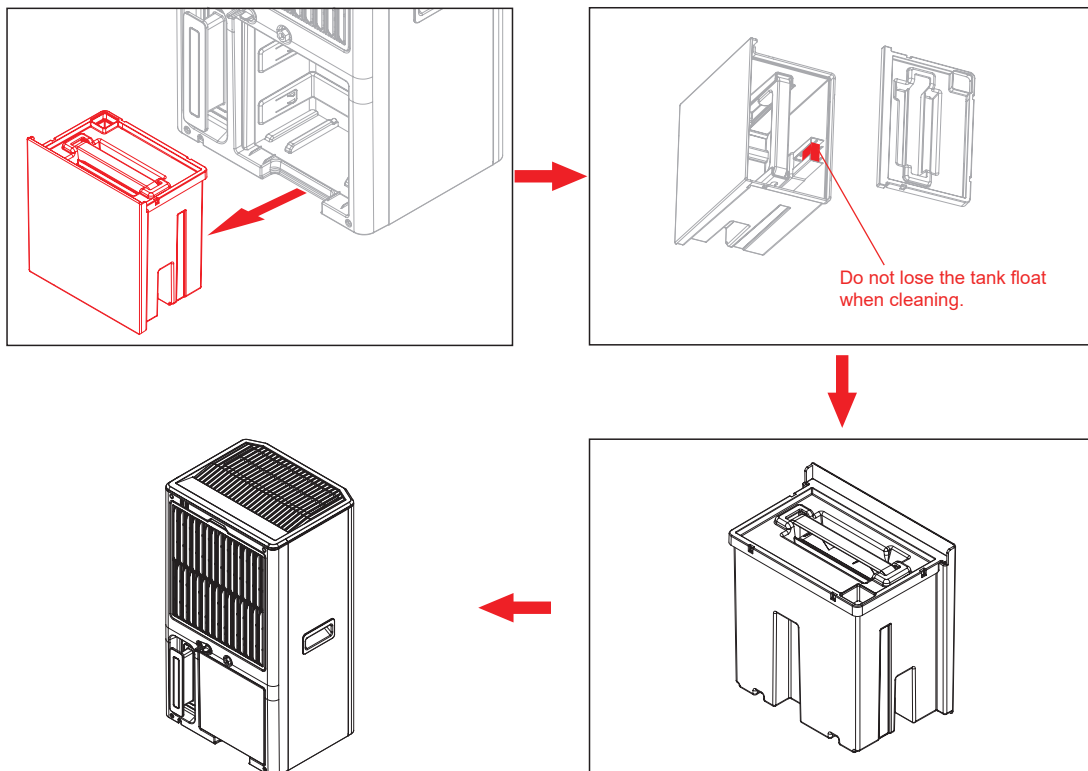
- **Water Tank:**

Remove the water tank from the machine.

Take off the water tank lid for cleaning. Please be cautious not to misplace the water tank float during lid removal, as it is essential for the machine's proper functioning.

After cleaning the water tank, reattach the water tank lid securely.

Place the cleaned water tank back into the dehumidifier, ensuring a proper fit.



## STORAGE TIPS

If you plan to store the unit for an extended period, follow these steps to ensure the safe and proper storage of your dehumidifier during extended periods of non-use.

1. Turn off the unit and allow it to thoroughly dry.
2. Wrap the power cord around the cord winder and store the drain tube neatly.
3. Store the dehumidifier in a clean, dry location.

## ERROR CODES

Error code	Issue	Solution
E1	Humidity sensor failure	Replace the humidity sensor.
L0	Ambient temperature $\leq 2^{\circ}\text{C}$	If the detected ambient temperature $>$ is $2^{\circ}\text{C}$ , it will be automatically restored.
HI	Ambient temperature $\geq 39^{\circ}\text{C}$	If the detected ambient temperature $<$ $39^{\circ}\text{C}$ , the system will be automatically restored.
E3	Defrosting failure	Check the system for any leaks.
E4	Water pump drain failure	Check if the drain is clogged and if the water level switch is stuck.
E5	Faulty coil temperature sensor	Check if the system is leaking and if the sensor is defective.

## LIMITED WARRANTY

Effective from the purchase date, this warranty covers XDRIER products as follows:

- Six months for parts, labor, and shipping for replacement parts/components.
- One year for parts and labor, excluding return shipping charges.
- Three years for servicing refrigeration systems (compressors, condensers, and evaporators), shipping not included.
- Five years for cooling system parts (compressors, condensers, and evaporators), shipping not included.

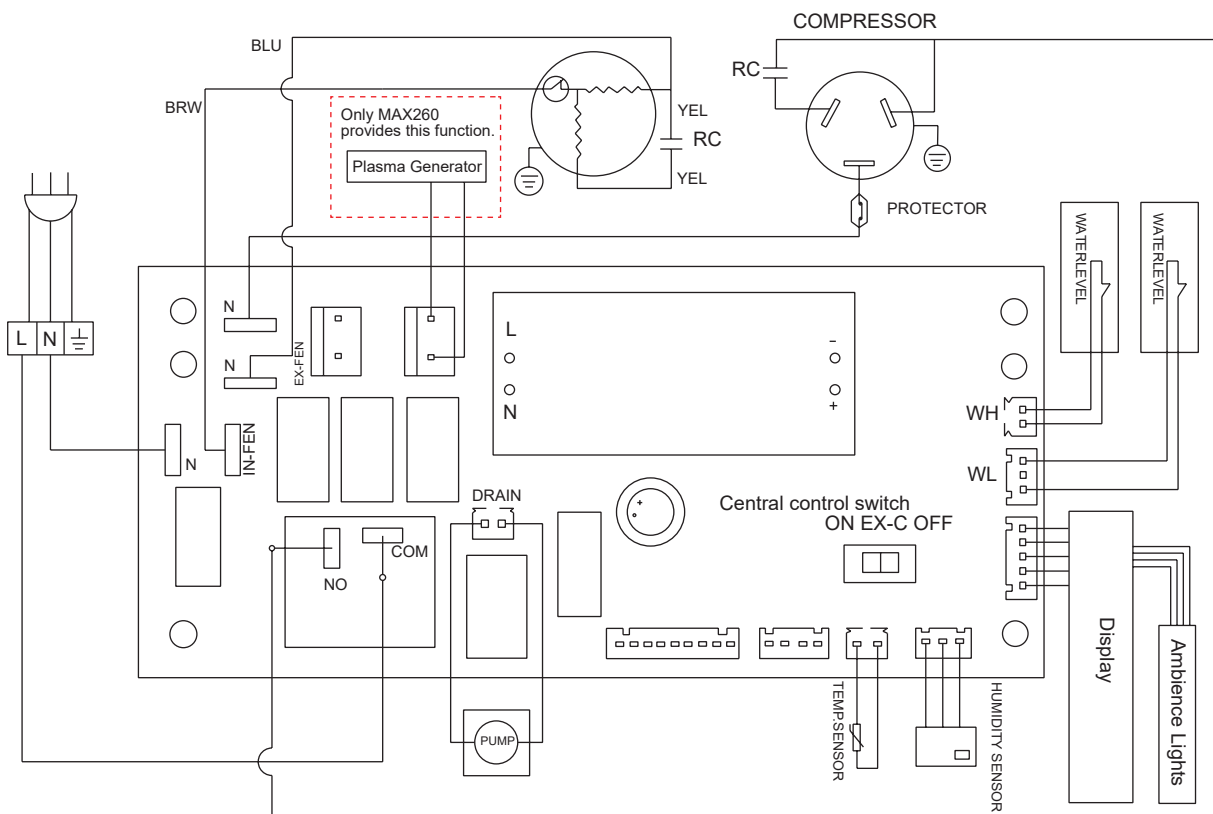
Valid for products purchased from the manufacturer or an authorized dealer, used as per provided instructions. XDRIER does not offer on-site service. Contact XDRIER at [\(888\) 575-9918](tel:8885759918) or [sales@xdrier.com](mailto:sales@xdrier.com) for warranty service, requiring proof of purchase or purchase order number. Repairs or replacements are at XDRIER's discretion during the warranty period.

## EXCLUDED LIMITED WARRANTY

This limited warranty covers defects in materials and workmanship arising during normal household, commercial, or non-commercial product use. However, it does not cover the following:

- Damage resulting from unintended product use.
- Damage caused by unauthorized modifications or alterations.
- Cosmetic damage, including surface scratches, dents, or other surface imperfections.
- Damage caused by misuse, abuse, pests, accidents, fires, floods, or natural disasters.
- Damage due to incorrect mains current, voltage, fluctuations, or surges.
- Damage due to inadequate product maintenance.
- Use of the product in a spa or outdoor pool area, which will void the limited warranty.

## WIRING DIAGRAM





# **DRIER** WARRANTY REGISTRATION CARD

To help us better serve you, we request you to return this "WARRANTY REGISTRATION CARD". The information will enable us to contact you quickly if it is ever necessary to correct a safety related condition in this product. Thank you for helping us to service you better.

First Name  Middle Initial  Last Name  Email Address

Address (Number and Street)  Apt #

City  State/Province  Zip  Phone Number

Date of Purchase Month  Day  Year  Model  Serial Number

Name of Retailer/ Address/ Phone Number

- Failure to return this form does not diminish your rights during the warranty period.
- If you have any questions, please feel free to contact us at (888) 575-9918 or [sales@xdrier.com](mailto:sales@xdrier.com)
- Please fill in the requested information and mail at address: 14752 Yorba Ct Chino CA 91710 US.







**XDRIER Solutions INC.**

Address: 14752 Yorba Ct Chino CA 91710 US

Tel: (888) 575-9918

E-mail: [sales@xdrier.com](mailto:sales@xdrier.com)